

LIBERCOURT

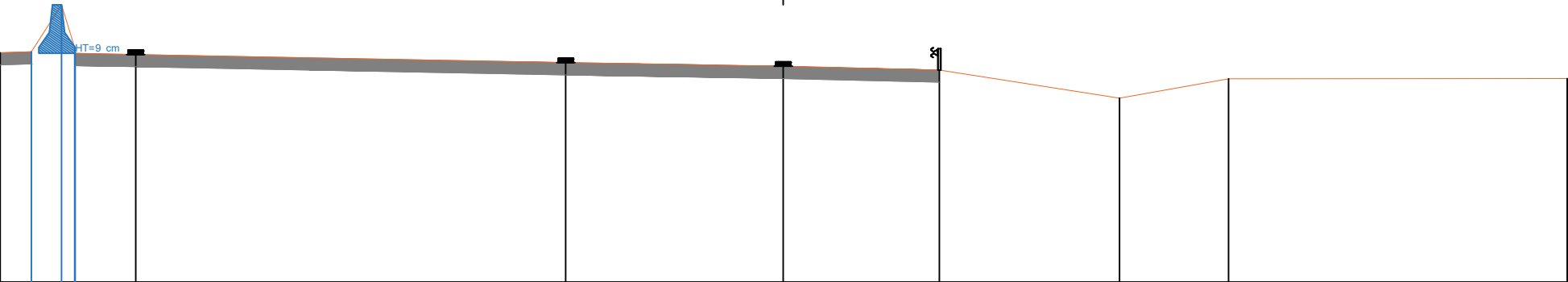
Autoroute A1

Sens Paris -> Lille

Profil 269

indice: 1

Sens Paris -> Lille



Echelle des longueurs : 1/100  
Echelle des altitudes : 1/100

PC : 20.00 m

Altitudes TN	23.76	23.78	24.55	23.75	23.73	23.60	23.54	23.48	23.02	23.34	23.34
Distances à l'axe TN	-12.863	-12.353	-11.856	-11.631	-10.638	-3.574	0.000	2.563	5.524	7.315	12.878
Distances partielles TN	0.510	0.496	0.225	0.993	7.064	3.574	2.563	2.961	1.790	5.564	